



# Solution PJ.03a-01 — Enhanced Guidance Assistance to Aircraft and Vehicles on the Airport Surface Combined with Routing

Enhanced Guidance Assistance to Aircraft and Vehicles on the Airport Surface Combined with Routing sees the extension of the A-SMGCS routing function to avoid potential traffic conflicts, an improved use of AMAN and DMAN information and integration with total airport management procedures. It includes the exchange of virtual stop bar identifier and status between ATCOs and flight crews to improve safety in low visibility conditions. The exchange of information between ATC and vehicles/aircrafts will be improved with the use of airport data link and other guidance means.

**Program** SESAR 2020 Wave 1

**Need for coordination** Network

**Related to** [Solution #04](#), [Solution #26](#), [Solution #46](#), [Solution PJ.03a-03](#), [Solution PJ.03b-01](#), [Solution PJ.03b-03](#), [Solution PJ.03b-05](#), [Solution PJ.07-01](#), [Solution PJ.07-02](#)

**Date V1 Gate** -

**Date V2 Gate** -

**Date V3 Gate** -

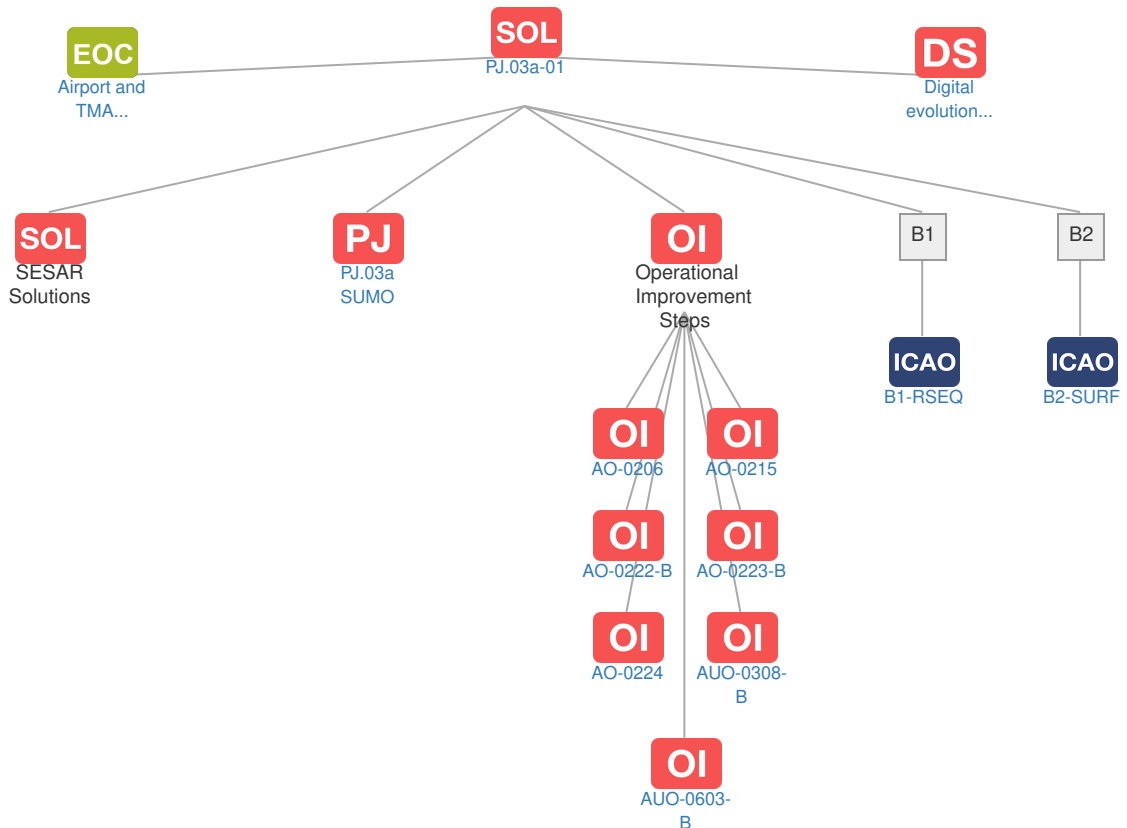
**Deployment Start Date** 31-12-2017

**Benefits Start Date (IOC)** 31-12-2028

**Full Benefit Date (FOC)** 31-12-2032

## Context

### Related Elements









## ICAO Block Modules

Designator	Title	Related Elements
B1		
B1-RSEQ	Improved Airport operations through Departure, Surface and Arrival Management	SOL OI OBJ PCP
B2		
B2-SURF	Optimized Surface Routing and Safety Benefits (A-SMGCS Level 3-4 and SVS)	SOL OI OBJ PCP