



Solution PJ.02-08 — Traffic optimisation on single and multiple runway airports

Traffic optimisation on single and multiple runway airports provides tower and approach controllers with system support to optimise runway operations arrival and/or departure spacing and make the best use of minimum separations, runway occupancy, runway capacity and airport capacity.

Program SESAR 2020 Wave 1

Need for coordination Local

Related to [Solution #15](#), [Solution #46](#), [Solution PJ.01-02](#)

Date V1 Gate -

Date V2 Gate -

Date V3 Gate -

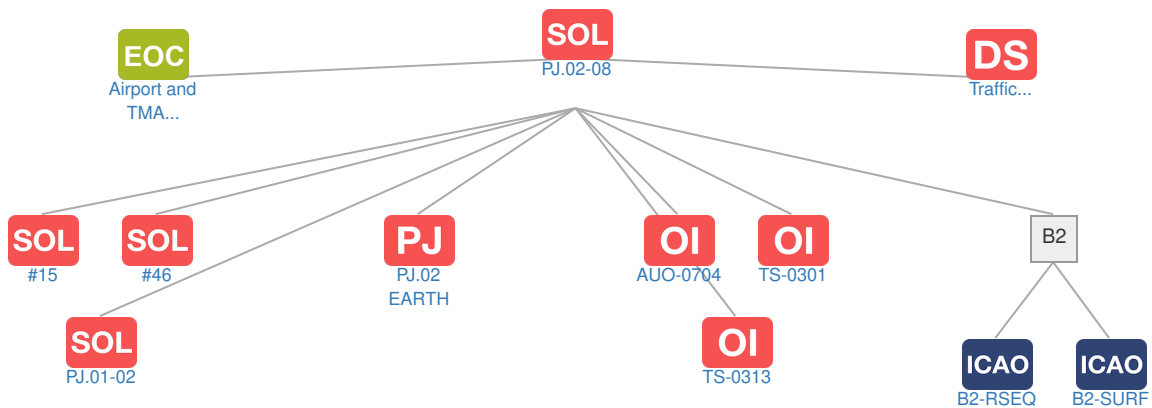
Deployment Start Date 31-08-2024

Benefits Start Date (IOC) 31-08-2026

Full Benefit Date (FOC) 31-08-2030

Context

Related Elements





Operating Environments: No associated data



Phases: No associated data



SESAR Projects

Code	Title	Related Elements
PJ.02 EARTH	Increased Runway and Airport Throughput	SOL



Operational Improvement Steps / Enablers

PCP PCP Elements: No associated data

OBJ Implementation Objectives: No associated data

ICAO ICAO Block Modules

Designator	Title	Related Elements
B2		
B2-RSEQ	Linked AMAN/DMAN	SOL OI PCP
B2-SURF	Optimized Surface Routing and Safety Benefits (A-SMGCS Level 3-4 and SVS)	SOL OI OBJ PCP