



Solution PJ.01-01 — Extended Arrival Management with overlapping AMAN operations and interaction with DCB and CTA

Extended Arrival Management with overlapping AMAN operations and interaction with DCB integrates information from multiple arrival management systems, enabled by SWIM, operating out to extended ranges into en-route sectors using local traffic/sector information and balancing the needs of each AMAN. The solution addresses the interaction between Traffic Synchronisation and DCB, including the identification of integration needs, and CTA in high density/complexity TMAs

Program SESAR 2020 Wave 1

Need for coordination Network

Related to [Solution #05](#), [Solution #18](#), [Solution #21](#), [Solution #28](#), [Solution #32](#), [Solution #33](#), [Solution #46](#), [Solution PJ.04-02](#), [Solution PJ.06-02](#), [Solution PJ.07-02](#), [Solution PJ.09-02](#), [Solution PJ.09-03](#), [Solution PJ.14-03-04](#), [Solution PJ.15-08](#)

Date V1 Gate -

Date V2 Gate -

Date V3 Gate -

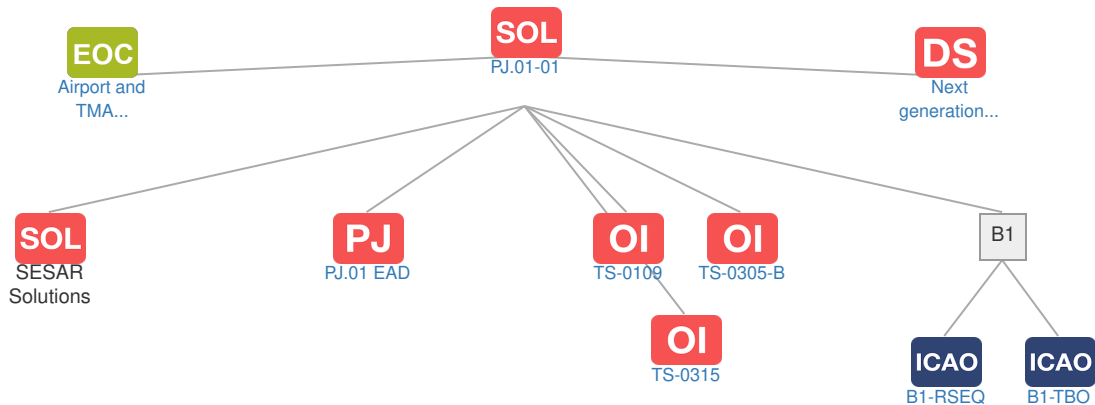
Deployment Start Date 31-12-2017

Benefits Start Date (IOC) 31-12-2028

Full Benefit Date (FOC) 31-12-2032

Context

Related Elements





Operating Environments: No associated data



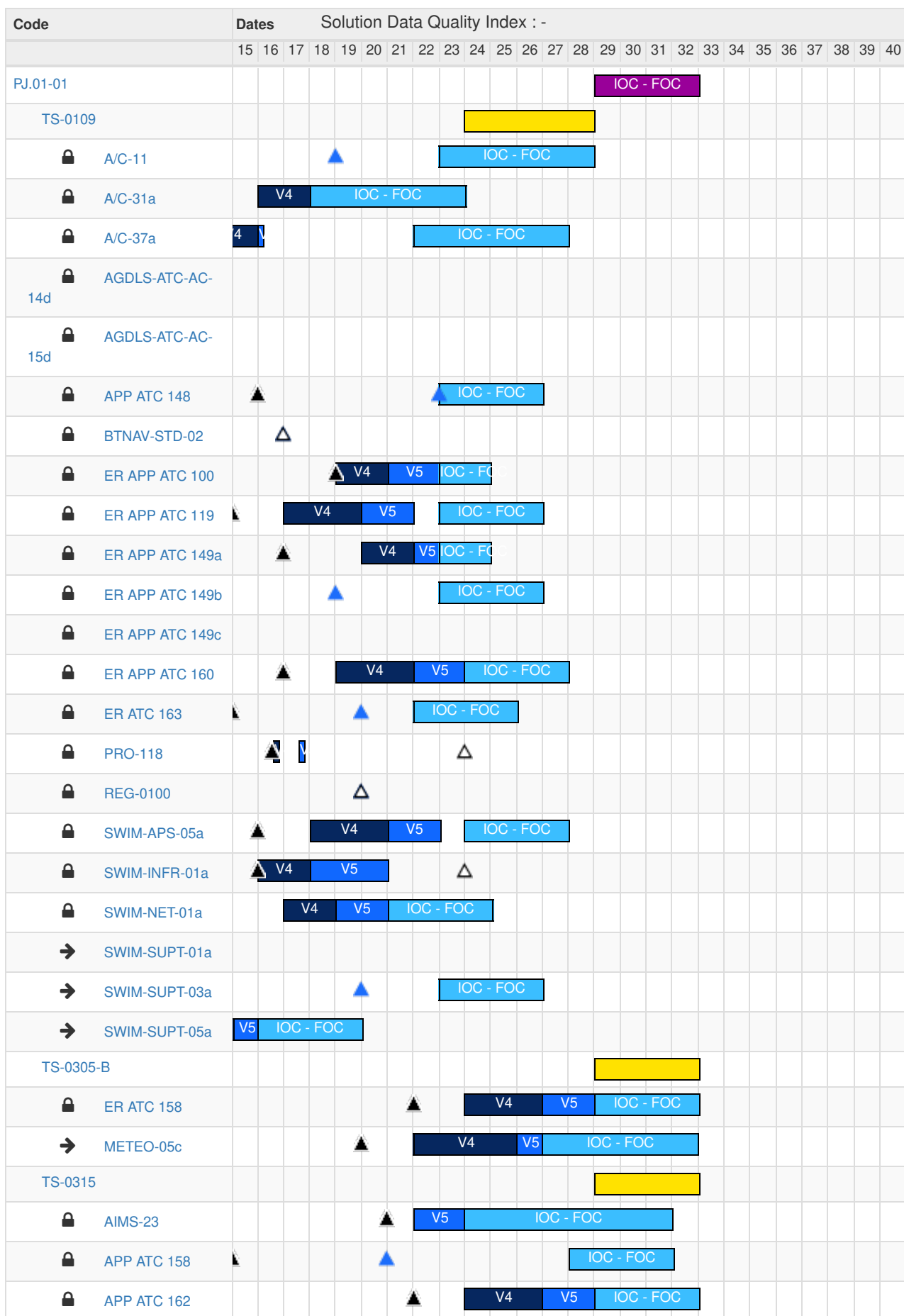
Phases: No associated data



SESAR Projects

Code	Title	Related Elements
PJ.01 EAD	Enhanced Arrivals and Departures	SOL

Operational Improvement Steps / Enablers



PCP PCP Elements: No associated data

OBJ Implementation Objectives: No associated data

ICAO ICAO Block Modules

Designator	Title	Related Elements
B1		
B1-RSEQ	Improved Airport operations through Departure, Surface and Arrival Management	SOL OI PCP
B1-TBO	Improved Traffic Synchronisation and Initial Trajectory-Based Operation.	SOL OI PCP