



## Solution PJ.09-02 — Integrated Local DCB Processes

*Integrated Local DCB Processes see the seamless integration of local network management with extended ATC planning and arrival management activities in shortterm and execution phases. It represents the core functionality for the Integrated Network ATM Planning (INAP) process through an enhanced Local DCB tool set. The solution will improve the efficiency of ATM resource management, as well as the effectiveness of complexity resolutions by closing the gap between local network management and extended ATC planning.*

**Program** SESAR 2020 Wave 1

**Need for coordination** Network

**Related to** [Solution #18](#), [Solution #19](#), [Solution #46](#), [Solution PJ.01-01](#), [Solution PJ.01-02](#), [Solution PJ.08-01](#), [Solution PJ.08-02](#), [Solution PJ.09-01](#), [Solution PJ.09-03](#), [Solution PJ.10-01b](#)

**Date V1 Gate** -

**Date V2 Gate** -

**Date V3 Gate** -

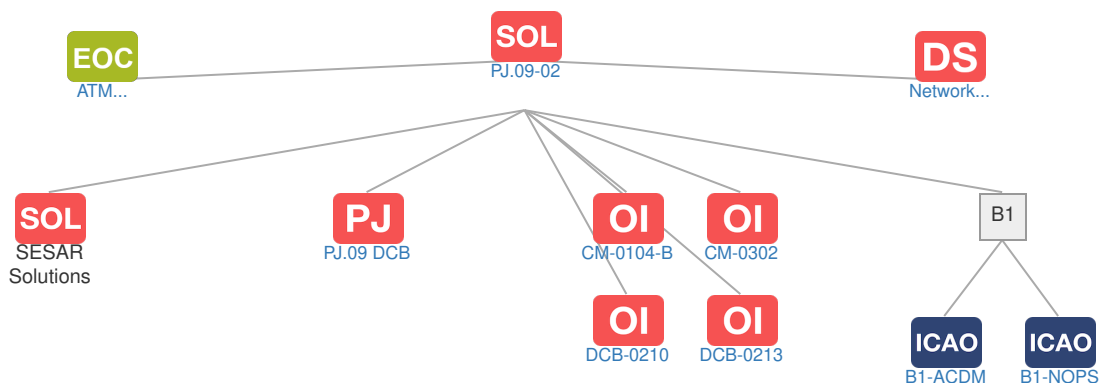
**Deployment Start Date** 01-04-2022

**Benefits Start Date (IOC)** 31-03-2028

**Full Benefit Date (FOC)** 31-03-2034

### Context

#### Related Elements





Operating Environments: No associated data



Phases: No associated data



## SESAR Projects

Code	Title	Related Elements
<a href="#">PJ.09 DCB</a>	<a href="#">Advanced Demand and Capacity Balancing</a>	<b>SOL</b>





## ICAO Block Modules

Designator	Title	Related Elements
B1		
B1-ACDM	Optimized Airport Operations through A-CDM Total Airport Management	SOL OI PCP
B1-NOPS	Enhanced Flow Performance through Network Operational Planning	SOL OI PCP