



AO-0222-A — Enhanced Guidance Assistance to mobiles based on the automated switching of Taxiway lights and Stop bars according to the 'Airfield Ground Lighting' operational service

Using Airfield Ground Lighting, mobiles will be guided along their cleared route, taking into account tactical decisions (made by the Apron Manager and Tower Ground Controller) and known constraints from the surface management system. The Airfield Ground Lighting infrastructure will switch automatically the taxiway centreline lights and stop bars accordingly for each mobile individually. The operational service is capable of automatically supporting a safe longitudinal spacing between mobiles on the aerodrome surface in all weather conditions.

Rationale There is an operational need for a guidance service independent from on-board equipment.

Forecast V3 end date -

Benefits start date (IOC) 31-03-2022

Full benefits date (FOC) 31-12-2027

Current Maturity Level V2

Solution Data Quality Index -

Current Maturity Phase R&D

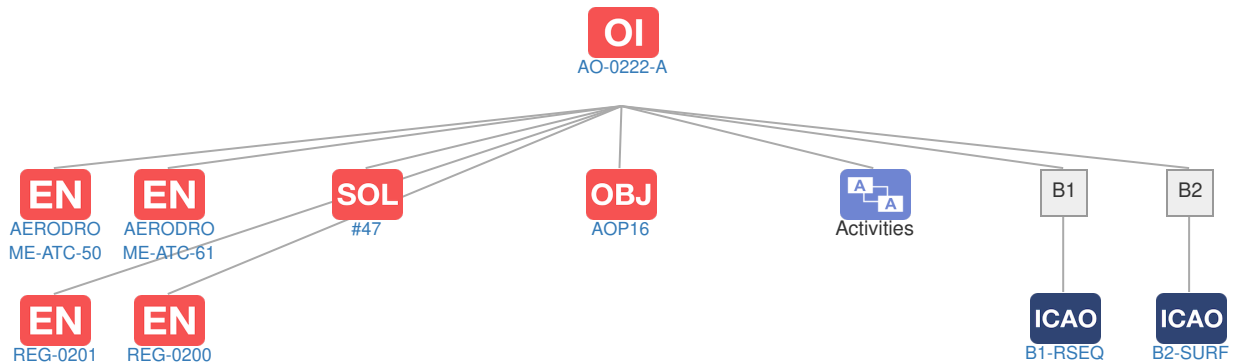
Scope -

Release R5

PCP Status -

Context

Related Elements



EN Enablers

Code	Dates																																													
	15	16	17	18	19	20	21	22	23	24	25	26	27	28	29	30	31	32	33	34	35	36	37	38	39	40																				
AO-0222-A																																														
AERODROME-ATC-50																																														
AERODROME-ATC-61																																														
REG-0201																																														
REG-0200																																														

OI Dependent OI Steps

Relationship Code	Title	Related Elements
Has successor	AO-0222-B Full Guidance Assistance to mobiles using 'Follow the Greens' procedures based on Airfield Ground Lighting (aprons/taxiways/runways)	SOL OI EN DS

SOL SESAR Solutions

Code	Title	Program	Related Elements
#47	Guidance Assistance through Airfield Ground Lighting	SESAR1	OI OBJ DS EOC ICAO

PCP PCP Elements: No associated data

OBJ Implementation Objectives

Code	Title	Related Elements
AOP16	Guidance assistance through airfield ground lighting	STK SOL OI

ICAO ICAO Block Modules

Designator	Title	Related Elements
B1		
B1-RSEQ	Improved Airport operations through Departure, Surface and Arrival Management	SOL OI OBJ PCP
B2		
B2-SURF	Optimized Surface Routing and Safety Benefits (A-SMGCS Level 3-4 and SVS)	SOL OI OBJ PCP

