



TS-0305-A — Arrival Management Extended to En-Route Airspace - single TMA

The system integrates information from arrival management systems operating out to 180-200 nautical miles from the arrival airport to provide an enhanced and more consistent arrival sequence. The system helps to reduce holding by absorbing some of the queuing time further upstream well into En-Route. Includes integration of traffic departing from within the AMAN horizon of the destination airport. Impacted En-Route sectors are expected to contribute to the sequencing towards a single TMA.

Rationale The AMAN horizon is extended to the En-Route airspace further from the TMA and may extend across several En-Route sectors, potentially including across borders, requiring an increased degree of cross-border co-operation and support from 'distant' ATM actors to resolve problems for an airport far outside their normal sphere of operations.

Forecast V3 end date -

Benefits start date (IOC) 31-12-2021

Full benefits date (FOC) 31-12-2025

Current Maturity Level V3 finalised

Solution Data Quality Index -

Current Maturity Phase R&D

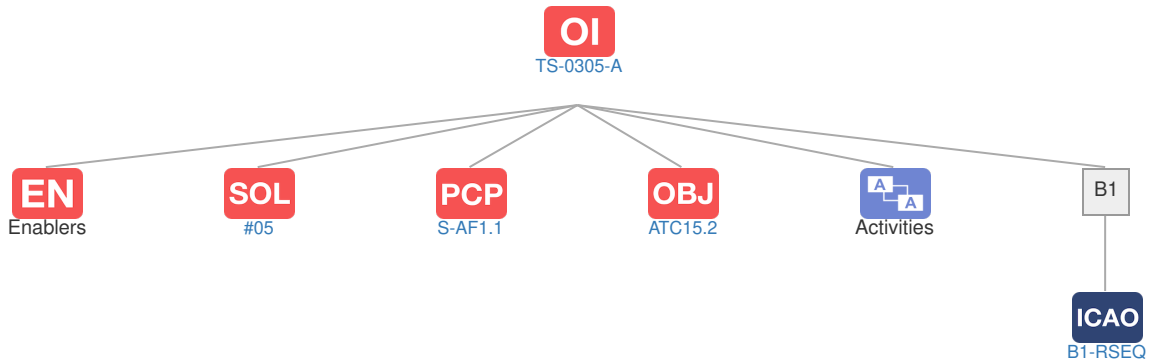
Scope -

Release R4

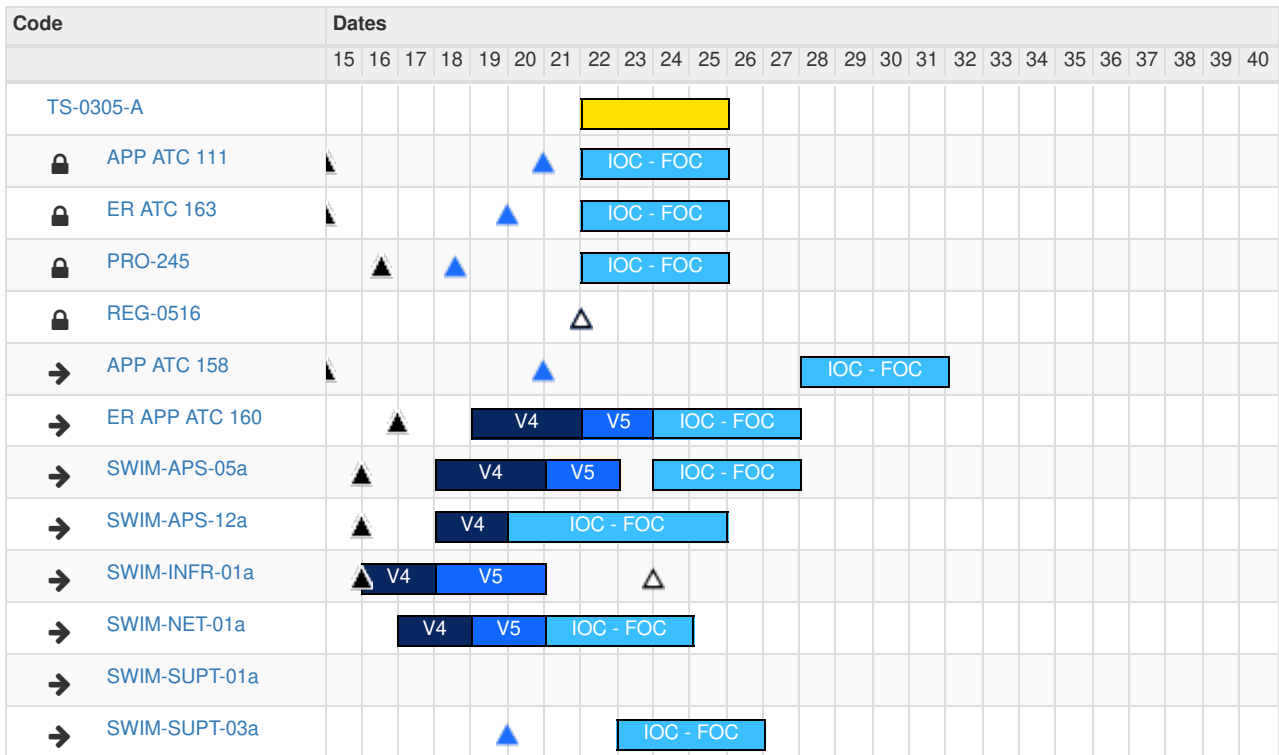
PCP Status PCP

Context


Related Elements



EN Enablers



OI Dependent OI Steps

Relationship Code	Title	Related Elements
Has predecessor TS-0305	Arrival Management Extended to En-Route Airspace	OI EN OBJ ICAO 
Has successor SDM-0402	E-AMAN Common Service (Business Improvement)	SOL OI EN DS
Has successor TS-0305-B	Arrival Management Extended to En-Route Airspace - impact of overlapping AMAN operations for En Route ATC	SOL OI EN DS






SOL SESAR Solutions

Code	Title	Program	Related Elements
#05	Extended Arrival Management (AMAN) horizon	SESAR1	SOL OI OBJ DS EOC PCP ICAO

PCP PCP Elements

Code	Title	Related Elements
S-AF1.1	AMAN extended to En-Route Airspace	SOL OI EN OBJ ICAO

Implementation Objectives

Code	Title	Related Elements
ATC15.2	Arrival Management Extended to En-route Airspace	     

ICAO Block Modules

Designator	Title	Related Elements
B1		
B1-RSEQ	Improved Airport operations through Departure, Surface and Arrival Management	