



AO-0501 — Improved Operations in Adverse Conditions through Airport Collaborative Decision Making

Systematic strategies are agreed and applied by CDM partners to deal with predictable (e.g. forecast bad weather, industrial action, scheduled maintenance) or unpredictable adverse conditions (e.g. unforeseen snow or fog, accident). This involves effective methods of exchanging appropriate information on the expected or actual arrival of such conditions, special procedures, and system support to facilitate the sequencing of operations where needed (e.g. de-icing).

Rationale In contrast with today's ad hoc solutions to unforeseen disruptions, prompt decision making, flexibility and adaptability of partners are facilitated during periods of reduced capacity, allowing for a faster recovery to normal operations.

Forecast V3 end date -

Benefits start date (IOC) 31-12-2007

Full benefits date (FOC) 31-12-2011

Current Maturity Level -

Solution Data Quality Index -

Current Maturity Phase R&D Finalised

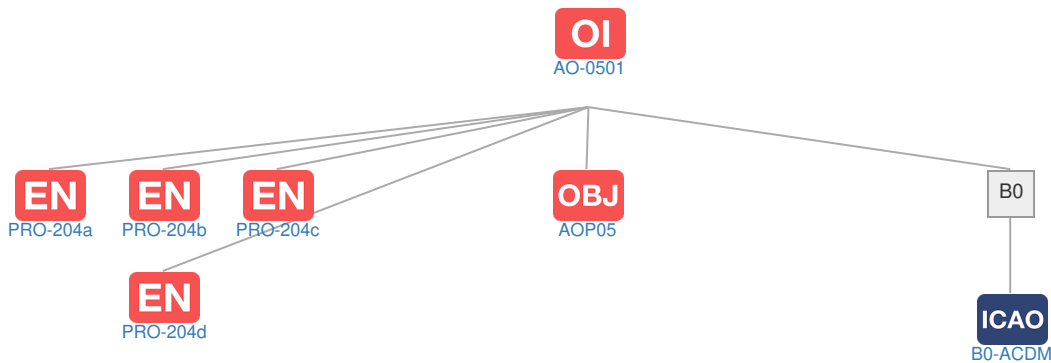
Scope Synchronised

Release -

PCP Status -

Context

Related Elements



EN Enablers

Code	Dates																													
	15	16	17	18	19	20	21	22	23	24	25	26	27	28	29	30	31	32	33	34	35	36	37	38	39	40				
AO-0501																														
PRO-204a																														
PRO-204b																														
PRO-204c																														
PRO-204d																														

OI Dependent OI Steps: No associated data

SOL SESAR Solutions: No associated data

PCP PCP Elements: No associated data

OBJ Implementation Objectives

Code	Title	Related Elements
AOP05	Airport Collaborative Decision Making (A-CDM)	

ICAO ICAO Block Modules

Designator	Title	Related Elements
B0		
B0-ACDM	Improved Airport Operations through Airport-CDM	